



Winchfield Festival

16th – 23rd June 2018



Useful Information

Venue

St Mary's Church, Bagwell Lane, Winchfield, RG27 8DB

Parking

Please follow the signs to the Festival field. Disabled parking spaces are available at the church.

Toilet Facilities

Toilets are located in the field (including disabled facilities).

Food and Drink

A licensed bar is available each evening from 6pm. Freshly cooked hot food, including vegetarian, is available on Marquee nights. You are welcome to bring your own picnic but please support the Festival and buy your drinks from the bar. More details on pages 8 & 9.

First Aid

Cover is provided each evening by Hart First Responders


For more information please contact

www.winchfieldfestival.org

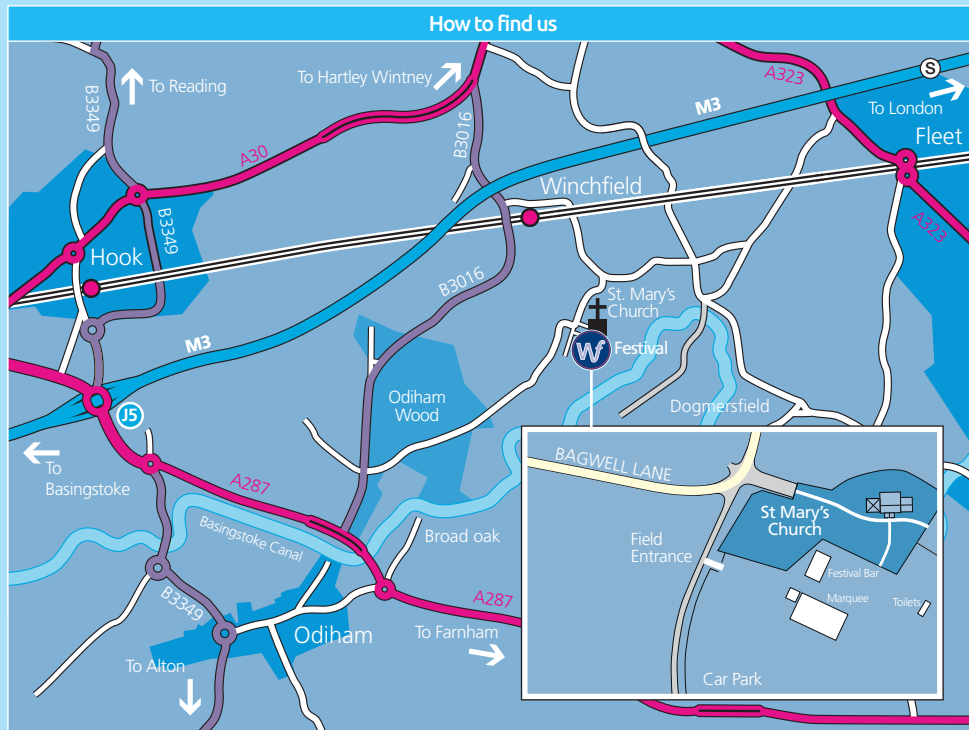
 info@winchfieldfestival.org

 boxoffice@winchfieldfestival.org



 0734 232 1713 (box office)
(March – June 2018)

 PO Box 7470, Hook, RG27 7NF



Programme by Oak Design

Welcome to the 2018 Winchfield Festival

Registered Charity No. 1079073

The Winchfield Festival was founded in 1990 to pay for a complete overhaul of the church organ. The Festival is held in mid-June every other year in the heart of Winchfield, one of the best-preserved Domesday settlements in the South East of England. Winchfield's fine Norman Church (St Mary's) provides the centre-piece for the Festival, with the Festival Marquee, food and beer tents and parking accommodated in the surrounding fields.

The Winchfield Festival aims to encourage the enjoyment of music in the community, and, thanks to the generosity of our Principal Benefactors (The Emmanuel Kaye Foundation and The Beryl Sleigh Trust) and the Festival Friends, we are able to support an Outreach Programme. The Outreach Programme includes concerts in local schools and clubs; free tickets for young people for some of the Festival concerts; and a special 'Jamie's Concert' for the carers of autistic people given by Noriko Ogawa. Details of the Outreach Programme are provided for each concert in the following pages.

The Winchfield Festival has developed a well-earned reputation for providing excellent chamber music played by world-class musicians in the intimate but informal setting of St Mary's. Besides chamber music, the Winchfield Festival also provides a wide range of other musical genres in the Festival Marquee.

Please make sure you order your tickets in good time, as space is limited (especially in the Church) and concerts are often booked out well before June. You can order your tickets online at www.winchfieldfestival.org

We look forward to seeing you in June.

Winchfield Festival Committee

Tristram Cary	Chairman and Musical Director
Kirsty Cary	Outreach Programme
Nick Cartledge	Musical Consultant
Meyrick Williams	Operations Director
Pam Whittle	Website and Publicity
Gillian Hamilton	Website and social media
Christine Strudwick	Box office and Festival Friends

Under 18s
£10 | £20.00

The Spitfire Sisters

The Spitfire Sisters is an internationally acclaimed vintage-inspired band with three-part vocal harmony at its core. The Sisters originally specialised in the repertoire of the 1940s, singing hits from the Andrews and Boswell sisters. But over the years they have broadened their horizons and they now perform an eclectic mix of songs including tunes from their own album 'Put your Phone Away', classic repertoire from the 1940s and modern songs with a vintage twist.



The Spitfire Sisters are led by Steve Christie, a versatile and talented pianist, multi-instrumentalist (drums, bass, organ, guitar and keyboards), session musician, sound engineer and composer.

The Sisters play saxophones and flutes, and with their their seven-piece backing group they are guaranteed to get the Festival off to a full throttle flying start – chocks away!

"We have welcomed the Spitfire Sisters to Highclere Castle on several occasions and each time they have been a huge hit! They give a wonderful energy and nostalgic feel to our events. They are all amazingly talented and stunningly gorgeous! Can't wait to have them back!"



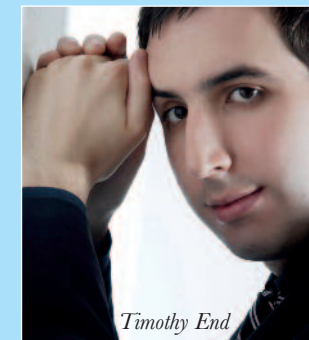
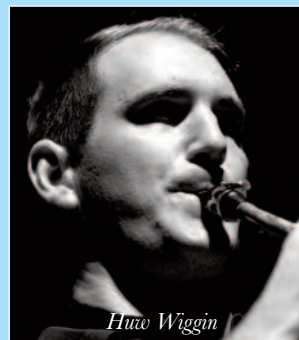
Buy tickets online @ www.winchfieldfestival.org

Under 18s
£10 | £20.00

Saxophone, Harp & Organ

Huw Wiggin, Oliver Wass and Timothy End

Huw Wiggin and Timothy End gave us a wonderful recital at the 2016 Festival, and they loved the atmosphere and acoustics of the church so much that they are coming back, but this time with the brilliant young harpist Oliver Wass, the first harpist ever to win the prestigious Guildhall Gold Medal.



Huw won the Gold Medal and First Prize at the Royal Over-Seas League Competition and was named Commonwealth Musician of the Year in 2014. He is Professor of Saxophone at the Royal College of Music and he is driving a surge of interest in the saxophone outside its jazz niche. Timothy End is an Associate of the Royal Academy of Music, and a multiple first-prize winning accompanist who works regularly with Huw.

Huw has worked with Oliver and Timothy to devise a special programme to explore the possibilities of this unusual combination of instruments and to make the most of the organ and special acoustics of St Mary's church.

Don't miss it

PROGRAMME

- Piazzolla Libertango, Oblivion & Fugata
- Bach Sonata in C Major, BWV 1033
- Bach Fuga Jesus Christus unser Heiland BWV 665
- De Falla Spanish Dance No.1 from the opera La Vida Breve
- Albeniz Asturias (from Suite Espagnola Op. 47)

Interval

- Barber Adagio for Strings
- Orlando Gibbons ... Fantazia of Four Parts
- Morriconi Gabriel's Oboe
- Gershwin Songs – Summertime, Someone to Watch Over Me, It Ain't Necessarily So



Buy tickets online @ www.winchfieldfestival.org

Under 18s
£10 | £20.00

Dante String Quartet

The Dante Quartet has a well-earned reputation as one of the most exciting young chamber groups playing today. The Quartet has won the prestigious Royal Philharmonic Society Award for chamber music, as well as numerous awards for its recordings, for instance the BBC Music Magazine and Diapason d'Or medals for its outstanding Hyperion recordings of the Franck and Faure quartets.



The Quartet is renowned for working with students and championing new music: they held a residency at King's College, Cambridge from 2007-2014 where they gave master classes and worked with the renowned King's College Choir. The Dante Quartet also holds its own thriving festival in Cornwall which attracts local audiences and visitors from all over the world to listen to chamber music in ancient churches and rural barns.

The programme features three great but very different quartets by Smetana, Shostakovich and Beethoven which all demonstrate the triumph of the creative spirit over adversity. Smetana's quartet was the first piece he wrote after becoming deaf at

the age of 52; Shostakovich's third quartet was written in 1946 just after the war and at a time when his music was heavily criticised and mostly banned from performance; and Beethoven's last quartet was written when he was deaf and nearing death – it was the last complete work he wrote.



PROGRAMME

- Smetana Quartet no 1
- Shostakovich Quartet No 3
- Interval**
- Beethoven Quartet Op 135

Under 18s
FREE | £20.00

Music in Shakespeare

K'antu Ensemble

Ruth Hopkins founded K'antu Ensemble in 2012 to explore the less-trodden territories of early music, combining elements of folk and world music with historically-informed techniques.

Come now, a roundel and a fairy song

Tonight's programme transports us back in time to Elizabethan and Jacobean England, exploring popular songs and dances featured in Shakespeare's plays. K'antu Ensemble's lively arrangements will be performed on an array of beautiful replica instruments and interspersed with speeches and sonnets by the Bard.

Music in Shakespeare has been performed many times including for the Shakespeare Anniversary at Stratford-upon-Avon's Shakespeare Institute.

K'antu's unique sound and eclectic programmes have resulted in extensive performances across the world. They have also broadcast on Radio 3's In Tune as house band during their residency at the Southbank Centre.



Soprano, Recorders,
Baroque Violin
Alto, Recorders
Tenor, Plucked Strings
Bass, Viola da Gamba
Bass, Percussion

Ruth Hopkins
Michelle Holloway
Ben Mitchell
Andrew Hopper
Tymoteusz Jozwiak

K'antu Ensemble leads interactive performances for children with special educational needs and people living with dementia. During the afternoon, they will be performing for the Forget-Me-Not Café in Hartley Wintney.

FREE TICKETS will be available for tonight's performance on a first-come-first-served basis for young people (under 18), school parties and disadvantaged people and their carers. Please contact the box-office to book your free tickets on 0734 232 1713

"An extraordinary and entertaining evening which ended with enthusiastic applause and an encore." (Göttinger Tageblatt)



Under 18s
£10

Corinne Morris & Peter Limonov

Cello & Piano



Corinne Morris is a highly accomplished 'cellist who started playing at the age of 8. At 16 she graduated with honours from the Royal College of Music and continued her training at the Conservatoire in Paris where she graduated with the first prize in both the 'cello and chamber music.

Rostropovitch was a great admirer of her playing and nicknamed her 'Corinnotchka'; Paul Tortelier was also a great admirer and said that he had 'unlimited confidence in her'. Sadly, Corinne had to take a break from playing for several years due to a shoulder injury, but in 2015 she relaunched her career to wide acclaim.

Corinne Morris will visit Long Sutton primary school in the afternoon to introduce the 'cello and its repertoire to a group of Year 5 and Year 6 pupils.

Peter Limonov studied piano at the Central Music School in Moscow. He was awarded the First Prize at the Nikolai Rubinstein Piano Competition in Paris in 1998.

The programme includes Beethoven's sonata No 4 and Britten's Sonata as well as two unaccompanied pieces – one of these, Wilde's "The Cellist of Sarajevo", is a tribute to Verdan Smajlovic, a 'cellist who played in public in the streets of Sarajevo to raise morale during the siege of Sarajevo (1992-1996) during the Bosnian war.



PROGRAMME

Beethoven 12 Variations on See the Conquer'ing Hero Comes Cello and Piano
 Wilde The Cellist of Sarajevo Cello
 Bridge Sonata H 125 Cello and Piano

Interval

Borenstein Soliloquy Cello
 Beethoven Sonata No 4 Op 102 No 1 Cello and Piano
 Britten Sonata Op 65 Cello and Piano

Buy tickets online @ www.winchfieldfestival.org

Under 18s
FREE

Gilbert & Sullivan's Patience

New London Sinfonia & soloists from the D'Oyly Carte Opera Company

Patience is a hit Victorian comic opera written in 1881 by Gilbert and Sullivan as a satire on the Aesthetic Movement of 1870's Britain. The opera is about the rivalry between two aesthetic poets (Bunthorne and Grosvenor) for the love of a milkmaid (Patience).

The performance will be semi-staged (as for the highly successful BBC Proms performance in 2009) and is directed by David Gibson, founder and conductor of the New London Sinfonia. David was for many years the Assistant Director of Music and Guest Conductor for the D'Oyly Carte Opera company where he performed all the Gilbert and Sullivan operas. The soloists are leading Gilbert and Sullivan specialists.



Simon Butteriss as Bunthorne (Patience, BBC Proms 2009)

Colonel Calverley	Officer of the Dragoon Guards	Ian Belsey
Major Murgatroyd	Officer of the Dragoon Guards	Chris Lawrence
Lieut the Duke of Dunstable	Officer of the Dragoon Guards	Stephen Anthony Brown
Reginald Bunthorne	A Fleshly Poet	Simon Butteriss
Archibald Grosvenor	An Idyllic Poet	Matthew Siveter
The Lady Angela	Rapturous Maiden	Fiona Taylor
The Lady Saphir	Rapturous Maiden	Zoe Marshall
The Lady Ella	Rapturous Maiden	Helen Gottschalk
The Lady Jane	Rapturous Maiden	Louise Crane
Patience	A Dairy Maid	Ellie-Jane Moran
Chorus of Rapturous Maidens and Officers of the Dragoon Guards		Occam Singers



FREE TICKETS will be available for tonight's performance on a first-come-first served basis for young people (under 18), school parties and disadvantaged people and their carers. Please contact the box-office to book your free tickets on 0734 232 1713

Buy tickets online @ www.winchfieldfestival.org

Winchfield Festival 2018 – at a glance

To buy tickets please go to www.winchfieldfestival.org
or phone the box office on **0734 232 1713**

Date	Concert	Where	Time	Food	Price – Adult	Price – Under 18s
Saturday 16th	The Spitfire Sisters	Marquee	7.30	BBQ Night Available from 6.00pm	£20.00	£10.00
Sunday 17th	Saxophone, Harp & Organ Huw Wiggin, Oliver Wass & Timothy End	Church	7.30	Tasty Sandwiches* Served in the Interval	£20.00	£10.00
Monday 18th	Dante String Quartet	Church	7.30	Tasty Sandwiches* Served in the Interval	£20.00	£10.00
Tuesday 19th	Music in Shakespeare K'antu Ensemble with Ruth Hopkins	Marquee	7.30	Paella & Lasagne Available from 6.00pm	£20.00	Call box office for FREE tickets
Wednesday 20th	Cello & Piano Recital Corinne Morris & Peter Limonov	Church	7.30	Tasty Sandwiches* Served in the Interval	£20.00	£10.00
Thursday 21st	Gilbert & Sullivan's Patience	Marquee	7.30	Caribbean Food & Tagines Available from 6.00pm	£20.00	Call box office for FREE tickets
Friday 22nd	Piano Recital Noriko Ogawa	Church	7.30	Tasty Sandwiches* Served in the Interval	£20.00	£10.00
Saturday 23rd	The Milestones	Marquee	7.30	Curry Night Available from 6.00pm	£20.00	£10.00

Festival Caterers

Our Festival caterers are all local people and if you would like to contact them their details are below.

The Festival Bar will be open each evening from 6pm.

* Donations towards the costs of the Sandwiches on Church Evenings will be gratefully received.



An award-winning Hampshire
Brewery producing beers of the
highest quality

www.andwells.com
T. 01256 761044



Specialists in supplying exclusive
and everyday wines and spirits

www.auriolwines.com
T. 01252 843190



CATERING FOR ALL OCCASIONS

Catering for all occasions locally
for 40 years.
Church Lane, Hartley Wintney

www.lewis-bros.com
T. 01252 543497



Authentic delicious flavours
inspired from the Caribbean using
our own marinades and sauces

www.misssheilas.com



Street food and event caterers
based in Fleet specialising in
Spanish Paella

info@streetfoodspain.com
T. 0776 622 5998



Catering for any occasion.
Old School Lane, Hook

T. 01256 762220

Under 18s
£10 | £20.00

Noriko Ogawa

Piano

This concert is dedicated to the memory of Ian Gavin-Brown, Chairman of the Winchfield Festival from 1996-2016, who died on 14 January 2018.



Ensemble. She was the Artistic Director for the Reflections on Debussy Festival 2012 at Bridgewater Hall.

The first half of Noriko's programme is devoted to Debussy as a tribute to the one hundredth anniversary of his death in March 1918. After the interval Noriko will play two pieces by the Japanese composers Toru Takemitsu and Yoshihiro Kanno before finishing with Chopin's famous Funeral March Sonata.



PROGRAMME

Debussy	Estampes
Debussy	Images Book 1
Debussy	Images Book 2
Interval	
Takemitsu	Rain Tree Sketch 2
Kanno	A Particle of Water
Chopin	Sonata No 2 in B flat mi
	Op 32 (Funeral March)

Noriko has appeared with all the major European, Japanese and US orchestras. She made her BBC Proms debut in August 2013 and appeared again in 2014 with the Endymion

Jamie's Concert

Noriko will host a 'Jamie's Concert' at 11 o'clock in St Mary's Winchfield for families and carers of autistic children. When Noriko first moved to London she lived with the family of a child with severe autism – Jamie. Noriko felt that by helping parents and carers of autistic children to relax in a musical setting with other families in similar circumstances, she would be indirectly helping their children. And so the successful 'Jamie's Concerts' were born. For more details see <http://uk.jamiesconcerts.com/>

Buy tickets online @ www.winchfieldfestival.org

Under 18s
£10 | £20.00

The Milestones

Motown, Disco, Funk, Soul & Modern Chart Hits

Collectively the members of The Milestones have live and recorded credits with some of the world's most revered artists including Tina Turner, Bob Dylan, David Bowie, The Eurythmics, Terence Trent D'Arby, Seal, Everything But the Girl, The Pretenders, The Temptations, Beverley Knight, Herbie Hancock and Roy Ayers.



The Milestones play Motown, Disco, Funk, Soul and modern chart hits. They authentically replicate the hits the way they were meant to be played.

There are milestones in the history of popular music that are characterised by greatness. The music of Stevie Wonder, Smokey Robinson, The Four Tops, Diana Ross, The Supremes and The Jacksons (to name but a few) have provided people all over the world and of all ages with countless good times. The classic artistes of years gone by only give us half the story. The milestones of the modern music era are also peppered with moments

of greatness. The music of Beyonce, Amy Winehouse, Whitney Houston, Prince, Mariah Carey, Justin Timberlake and Lauryn Hill have also provided those who listen to them with good times beyond compare.

As the name suggests The Milestones bring together the music of these great pioneers in one authentic, extraordinary band.



Buy tickets online @ www.winchfieldfestival.org

Suppliers & Supporters

Thank you to our suppliers and supporters who all play their part in controlling our costs:

Andwell Brewing Company	Beer
Auriol Wines	Wine
Blendworth Trailers	Fridge Truck
DP Fleet	Banners
Eurohire	Sound & Lighting
Facilities Resource Management	Site Security
Icon Digital	Website Design
John M Carter Ltd	Marquees
Oak Design	Design
Ray Teale	Carpet Fitting
Richard Thorpe	Fire Safety Services
Wave-band Ltd	Communications
Site Equip	Toilet Facilities
William Sturges LLP	Auditors
Lewis Bros	Catering
Miss Sheila's Caribbean Cuisine	Catering
No Bull Street Food	Catering
Whitewater Catering	Catering



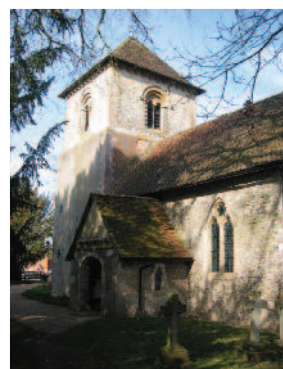
STEINWAY & SONS

The Steinway concert piano chosen and hired by the Winchfield Festival is supplied and maintained by

Steinway & Sons, London.



This beautiful Grade I listed church has played its part in Winchfield life for over 850 years. Generations have been baptised and married here, and buried in the churchyard.



St Mary's has been preserved for us and is a memorial to those who are commemorated in the church and churchyard. Now the challenge is for us to maintain this historic church for future generations.

The Friends of St Mary's Winchfield charity was established in 2008. Its Charter states 'the principal object of the Charity is to support the maintenance, repair, restoration, preservation, beautification and improvement of the fabric of the church and churchyard of St Mary's Winchfield and the monuments, fixtures, fittings, furniture, stained glass, ornaments and other chattels belonging to the Church'.

In the last ten years the Friends have donated £27,000 and supported a number of projects including the following:

- Repair and refurbishment of all the stained glass windows.
- Repairs to the tower render and roof.
- Refurbishment of pathways, fencing, gates and benches in the churchyard.
- Repairs to the church organ.
- Safety improvements to the electrical installations.
- Repair to the chancel arch; clean and re-lay York stone paving in the porch; repoint east nave and gable elevations.

We organise a number of fundraising events each year to help preserve this fine Norman Church. Please join us:

The Friends of St. Mary's Winchfield

Registered Charity: 1124379

Collect a leaflet from the Church or from the Friends' Gazebo on Marquee Evenings.

The background features a vibrant, abstract design with flowing purple and blue lines that create a sense of movement and energy. A stylized, dark silhouette of a person is visible on the right side, partially obscured by the colorful patterns. The overall aesthetic is modern and artistic.

Thank you

The Winchfield Festival is committed to keeping ticket prices affordable and to funding a musical outreach programme for schools and other groups in the local area. We could not do this without the generous support of our Principal Benefactors, The Emmanuel Kaye Foundation and The Beryl Sleigh Trust. We are also grateful for the financial support of our many Festival Friends and for the time and effort of over 100 volunteers who help with a wide range of tasks.

Our particular thanks go to the Parochial Church Council for the use of the Church; Catherine and Andrew Goddard for the use of their field for the marquee and parking; Malcolm Billyard for the design and artwork of the Festival programme; Martin Kelly, Mike Garwood and Malcolm Billyard for running the bar; George and Sarah Adams, Mihai and Raluca Rusu, Rich Blay, Ben Robinson and other Winchfield residents who assist in so many ways. And finally thanks to the committee and their families for their dedication and commitment.

Tristram Cary

Chairman

Winchfield Festival
www.winchfieldfestival.org

Registered Charity No. 1079073